

National Association
Aladdin Lamp Collectors
35th Gathering of Aladdin Knights

August 2-4, 2007 Including
18th International Lamp Show & Sale Aug. 4, 2007
Marriott Airport Hotel, Nashville, TN

Hotel Information:

615-889-9300

800-770-0555

Gathering Information:

270-488-2116

www.aladdincollectors.org &

www.aladdinknights.org



Regional Meets and Shows

The following meets are organized by Aladdin Knights for the benefit of collectors in their area.
Call the telephone numbers for information.

We encourage you to attend, study, learn, collect and enjoy.

Great Texas Lamp Show—Marshall, TX

March 2-3, 2007

Alton Nutt

903-693-5463

Allure of Light—Bowie, TX

April 6-7, 2007

Laurie McCullar

940-872-2010

Midwest—Johnston, IA

March 21-23, 2007

Bob & Judy Jansen

402-895-2073

Mideast—Richmond, IN

October 12-13, 2007

Debi Sue Hill

765-724-2971

765-620-8495

East—Somerset, PA

March 29-31, 2007

Tom Small

814-634-5639

Tom Millman

513-734-6884

Southwest Meet—Tulsa, OK

October 25-27, 2007

Curtis Rohr

918-341-4689

BUY — SELL — TRADE

Advertising rates are 20-cents per word for this newsletter which includes listing online in the "Knights Only" webpage for two months. Be sure to count "For Sale" or "Wanted" plus your name, address and phone number as part of your ad. Please send ads on a separate sheet of paper. Payment must accompany ad. Your one 20-word free ad must accompany your renewal. Deadline for May issue is April 15.

Abbreviations: fs = flame spreader; w/b = with burner; n/b = no burner; NIB = new in box; NOS = new old stock; NIS = new in sleeve; TL = table lamp; HL = hanging lamp; LD = Lincoln Drape; WD = Washington Drape; MS = moonstone.

FOR SALE: #4 student lamp w/repro 205 shade \$4,995; B-70 Solitaire \$1,995; 205 genuine opal \$495. Jay Price 231-839-7725 or 231-633-7271.

XXXX

FOR SALE: Tools for straightening B galleries, includes pulling tool, mandrell for reforming gallery, flame spreader mandrell, oak driving tool, instructing, shipping. Send international money order for \$100 to Ray St. Denis, 1121 Hamilton Rd., London, Ontario, Canada, N5W 1A7, 519-951-0738.

XXXX

FOR SALE: Aladdin collection, 58 glass lamps include B-77, B-86 and B-91; 32 metal lamps, shades, burners, chimneys. NS Canada 902-648-2934 or trilbystorm@eastlink.ca.

XXXX

WANTED: GWTW satin ruby red glass base, 5 3/4" top opening, 2 1/2" base, 8" tall +/- 1/2". 530-888-6298. John.ries@hotmail.com.

XXXX

FOR SALE: Kerosene and electric Aladdins. Christine Olson, 215-343-6649.

WANTED: Model 1, 3, 7, 8 flame spreaders. Bud McIvor, Box 149-584 Dugald Rd., Dugal, Manitoba, Canada R0E 0K0, 204-853-2085.

XXXX

FOR SALE: 8 fs NIS #6, 4 #11, \$25 ea; NIB wicks 3 #11 and 12 (UK), 3 #6 \$25 ea; NIB mantles 5 #3 to 11 U.S., 2 #3 to 11 Canada, 6 B, A or 12, Canada, 4 B-12 \$20 ea. Charlie Doddridge, 613-828-1711.

XXXX

FOR SALE: 1992 Moonstone Aladdin. Never out of box. \$850.00 plus shipping and insurance. Carla Wellendorf, 559-299-7038 or email lampcarla@sbcglobal.net



FOR SALE: Aladdin finial displays. These custom-made finial stands are made of sturdy plastic. Colors are blue (left) or green (right). Also now available in Chinese Red. Each display is \$50.00 plus \$8.50 S & H. Check or Money Order. For more information and orders write to Joe Moran, 502 Walnut St., Grafton, WV 26354. Phone 304-265-0878 from 9:30 AM to 8:30 PM.

ATTENTION ALL KNIGHTS!!

You will not receive the usual renewal slip.

M—your renewal is due in March; if **S**—your renewal is due in September.

The next 2 numbers tell the year due. (Last is your personal Knight number.)

M 07 Due RE-LIGHT THE KNIGHT M 07 Due

Here is my (renewal) or (gift subscription):

NAME _____ KnightNo. _____

Address _____

City _____ StateProv. _____ ZipPC _____

For renewal from May 2007 to March 2008. Enclosed is \$25.00 for renewal USA or Canada; other countries \$30.00. Checks on US bank or Internat'l Postal Money Order—U.S. funds only.

Checks to: J. W. Courter

CLIP this form and MAIL TO: J. W. Courter, 3935 Kelley Rd., Kevil, KY 42053



The Mystic Light of the Aladdin Knights

Volume 34 No. 6

Aladdin is The Magic Name in Lamps

March 2007

Aladdin® Electric Table Lamps 1946 to 1951 The Post War Years Don Carey

With WWII over, the country and industry were doing their best to get back to normal. Aladdin Industries was looking to reestablish themselves as a leader in the electric lamp business. The post-war era ushered in a new and large challenge. This challenge was to maintain the integrity of the current and popular Alacite glass without the use of uranium oxide, as a coloring agent. A revised formula was created by Floyd Pruden. This formula change along with new glass manufacturing techniques made it difficult to match the original color, of prewar Alacite created by Henry Hellmers. Thus, the varied colors of post-war Alacite lamps and dishes. A sad note for collectors is that no other colored glassware was to be made after Hellmers left. Generally, the post-war lamps were also slightly larger in overall size.

In November of 1946 Aladdin set up at a Victory Lamp Show in New York to introduce the 1946 line of lamps. This was basically the reintroduction of many lamps previously sold in 1942. To help generate sales, the 1946 catalog offered six "Quick Profit-Quick Selling" package specials. These were offered with a savings off the wholesale price. Some new designs were introduced in 1946. Urn lamp G-376 was offered in 1946 and the G-377 urn in 1947 (see below). A cover was added to the G-377 in 1951 and the lamp sold as G-379.

Collector confusion continued (today) with the numbering of the boudoir lamps but the company seemed to go out of their way this time. They offered a G-36 in 1946, which appears to be scarce or nonexistent and an entirely different G-36 in 1948. (see the AEL, page 47)



G-376

G-377

In 1947 the first full line catalog was offered after the war. Supplemental catalogs were issued with special package offers similar to the sales program in 1946.



G-295-CD

In 1947 and 1948, Aladdin faced severe competition in the electric lamp business with over 2000 electric lamp manufacturers in business at that time. Decorative decals were added in 1947. These lamps were designated with the letter "D" after the catalog number. To help stay competitive, Aladdin offered lamps that complied to standards set by the "Certified Lamp Manufacturers." These lamps were identified with a "C" following the catalog number. Certified lamps have a glass and metal reflector rather than a standard harp. Around this time a new type of switch was introduced. The "Trigger Ring" switch was a high-low-off type of switch. (Seen in the circle). Some of the lamps were Certified and were marked with decals. Metal lamps were still in the catalog.

continued page 6

In This Issue

Light Beams	2
Knight News	3
New USA Passport Rules	3
NAALC & 2007 Gathering News	4
The Aladdin Lamp is 100	5
The Future of Collecting	7
Faking Aladdin Parlor Lamps	9
Aladdin Collectors Meets	12

LIGHT BEAMS

While many of you are enjoying snow, spring has sprung in Kentucky. First time ever, we picked jonquils in January but have full bouquets now at the end of February. Must start the tomato seed and order the sweet corn seed!

XXXX

Five months and counting to the 35th Gathering. We look forward to seeing you in Nashville, August 2-4. We do expect to sell out our room block as reservations are coming in nicely. Be sure to make your plans now. We will include registration forms in the May newsletter. Meanwhile, we are contacting dealers and making plans for room set-up arrangements, tables needed, etc.

XXXX

This issue concludes 34 years of *The Mystic Light*. We had no idea, or plan, that our little newsletter would generate such widespread interest in collecting. We thank you for your renewals, your news and your support. We promised 8 pages when we started. Today we average 12 to 16 pages including the wrapper pages, which give us added room for more news. The wrapper is more economical than envelopes and allows us to give you more 'bang for the buck'.

XXXX

My new book *Center-draft Kerosene Lamps, 1884-1940* was delivered to Collector Books on February 1. Some 445 pages covering 50+ companies and well over 240 brands of lamps. The book is scheduled for release this fall and with luck we could have copies by Gathering time. The book has been a full 10-year project, with time out for the Aladdin Mantle Lamp Co (1999-2001). More information will be forthcoming when we know price, release date, etc.

XXXX

We enjoy lighting and burning our Famos 120 lamp just as much as our Aladdins. The Famos is a mantle lamp that was sold in England well into the 1950s. The lamps turn up in this country but the mantles are rare because they are much larger than the Aladdin and no one makes them today. Trevor Emmens, in the UK, has created the "Famos Forum" where he gives a photographic history of Famos lamp models, wicks, mantles and chimneys. You can access the site via the Guild links: www.lampguild.org.



XXXX

We are pleased with the articles written by Don Carey on Aladdin electric lamps. He will conclude the series in the May issue. I have received many compliments on his timeline views of the electrics. The best days for collecting these lamps is now. They are plentiful, 50 to 80 years old, and practical to use in your home.

XXXX

Paul Davis sent the photo (above right) from the *Arkansas Democrat Gazette*, Feb. 17, 2007. The article pro-



motes see-through acrylic furniture in the fashion of a 1920 Paris apartment. I have cropped the photo to show the Alacite Aladdin G-235 lamp. Paul says he doesn't care for the overpriced Deco style Lucite furniture (table, \$1600, and bench, \$1400), but the Aladdin caught his eye.

XXXX

Jim Fuller bought a Model 3 Aladdin Parlor Lamp and thought he had a "treasure" only to learn, much later, that the lamp was not the full restoration he thought it to be. We thank Jim for sending the lamp to us for study and to educate collectors on how to spot alterations (see page 9).

XXXX

WELCOME TO NEW KNIGHTS: Edward L. Allison, OH; Glenn M. Sanford, OR; Ian McCulloch, Ont.; Harry Lynn, MI; Ronnie Fie, TN; Michael Forsyth, Australia; Butch Echols, TX; Robert Brummett, PA; John & Mary Lizon, WA; Ronald Book, PA; Lee Esterline, MI; Lawrence Graper, IA; Aimee & Tim Abel, MI; Steve Fouts & Christine Arsenault, KY; Bill Channell, IA; Edward & Patsy Kennedy, KY; Douglass & Susann Berg, SD and Greg & Shannon Veenestra, MI.

We hope you enjoy the *Mystic Light* and your association with the Aladdin Knights.

—Be well and keep in touch

Bill

The Mystic Light of the Aladdin Knights is published every other month as a medium of exchange for collectors of Aladdin lamps and related memorabilia. Subscription and knighthood is \$25.00 per year. Collectors may correspond with the editor by writing to J. W. Courter, Editor, *Mystic Light*, 3935 Kelley Rd., Kevil, KY 42053. Phone 270-488-2116. Email: brtknight@aol.com or treva1111@aol.com.

Aladdin Knights are associate members of the National Association of Aladdin Lamp Collectors, Inc. (www.aladdincollectors.org)

Photographs and information submitted to the editor may also be used on the website www.aladdinknights.org, which complements this newsletter.

Grateful acknowledgement is given the Aladdin Mantle Lamp Co. for permission to publish certain information and photographs in this letter.

"ALADDIN" and Lox-On" are trademarks of Aladdin Industries LLC, Nashville, Tennessee.

Copyright © 2007 by J. W. Courter. Reproduction in whole or in part is prohibited.

Knights News. . . .

Send us your news! Cheerful or sad, Knight friends like to keep up with each other.

We are saddened at the death of our good friend **Jeanne Ann Robertson** on Feb. 9, 2007. She fought a brave battle with leukemia. The lovely lady always had a smile. She was an emergency room nurse for 18 years. A beautiful embroiderer, she had completed 11 quilt squares and her last one will be in the 2007 Raffle quilt. During the last months, she would email us and brag on **Kenny** taking such wonderful care of her. Our deepest sympathy to Kenny, the family and her many friends. We will miss Jeanne Ann at the Gathering this year but look forward to seeing Kenny.

Paula Gadulka went to her back doctor because she had severe stomach cramping. He ordered a CT scan of the stomach and they found a mass on one of her kidneys. We're thinking about you and hoping for the best Paula!

Ron Musch informed us of the death of his father, **Albert Musch**, Knight number 4130. He was 83. Ron wrote: **Albert and Grace** left the farm in 1982 and began their 15 year quest as avid collectors/restorers of things old; specifically Aladdin kerosene lamps, old Sleepy Eye pottery and battery powered post-WWII tin toy novelties. They prowled auctions, antique stores, flea markets and collector gatherings in their quest to feed their collections. Their last 15 years together were for them a chance at finally knowing the childhood years which had been long denied them by the combination of the depression, the war, and day-to-day responsibilities of parenthood and running the farm. Grace passed away in May 1997, and now they are united again. If there are Aladdin lamps anywhere to be found in heaven, you can bet that they are being restored and treasured!

Thanks Ron for this tribute to your parents and for sharing with the Aladdin Knights.

Tom and Geri Logan informed us that **Dick Piller** passed away January 25, 2007 after a struggle with cancer. They say "We will miss his enthusiasm and good sense in the lamp fraternity of Eastern Ontario." Our sympathy to the family and friends. **Tom and Geri** also told us of the death of **E. Wayne Todd**, who was an ardent Aladdin collector. Wayne didn't attend the Gatherings as often as he wanted

because he was an industrial electrician and July and August was the building season. Sincere condolences to Wayne's family.

We are sorry to hear Knight **Bart J. Finn, Jr.** passed away in August after a long illness.

Mary Hurst reminded us that her Aunt **Agnes McElfresh** past away August, 2006. Many Knights knew **Bill and Agnes** who shared their experiences, working at Aladdin in Alexandria, at past Gatherings.

Congratulations to **Sherley and Rosemary Hop** on your 60th wedding anniversary. Are you sure? You look so young in your photograph!



Always nice to hear from **Jim and Joy Michmerhuizen**. Joy loves her Aladdinettes and sent this picture of a "few of them." She seeks one with its paper shade.



Lights dim at Alexandria Lamp Shop. Fran and Tony Governanti, Knights #921, are closing their lamp shop in New Hampshire after nearly 34 years; 21 years on main street in Meredith.

They started business in Alexandria, NH in 1973. The lights may go out on main street but Tony and Fran will continue lamp repairs and restoration at their home shop. They plan more time for leisure and grandchildren activities by downsizing and moving their operation into their retirement home-garage. Tony has gained wide reputation for repair of antique kerosene lighting. You can contact them for appointment at 603-279-4234.



Lotus sitting on mantles in Alice Stringham's kitchen during power outage. One smart cat, she knows where the heat comes from in John's Aladdin lamps.



USA Passport Rules

New passport rules went into effect Jan. 23, 2007, requiring travelers from the USA, Mexico and Canada to carry valid passports to enter or re-enter the U.S. More information: www.getapassportnow.com



Web Site
of the

Aladdin Knights



<http://www.aladdinknights.org>

Continue to use the old user name and password:

March User Name: **Aladdin**

March Password: **collector**

National Association of Aladdin Lamp Collectors, Inc.

35th Gathering of Aladdin Knights

Nashville, Tennessee

August 2-4, 2007



General Knights

Bill and Treva Courter

3935 Kelley Rd., Kevil, KY 42053; 270-488-2116

Marriott Airport Hotel—Make your room reservations

now: 800-770-0555 or DIRECT 615-889-9300

Rate 1 to 4 in room \$84.00

• Tell hotel *Aladdin Knights* for special rates.

Dealers ask for Vendor's Wing **only** if you plan to sell from your room.

Quilt News. The auction quilt bought by Rob Strickland last year has been accepted to hang in the 23rd American Quilters Society Quilt Show, April 25-28, in Paducah, KY. Congratulations to the Ladies of the Knights, Diane Carey and Ellen Strickland!

Lamp Show & Sale. Dealer contracts will soon be in the mail from Doug & Judy Myers, KRT.

Pets: The Marriott will accept a limited number of pets as a special concession for Aladdin Knights.

Knights of the Roundtable for 2007

KRT	Name/email	Address	City State, zip	Telephone	Email
General Knights	Bill/Treva Courter treval111@aol.com	3935 Kelley Rd.	Kevil, KY 42053	270-488-2116	brtknight@aol.com
Auctioneer	Dennis & Sue Perro .. Jim Michmerhuizen ..	5379 190th St. W. 511 E. Lincoln Ave	Farmington, MN 55024	651-460-6401 616-772-2096	perro004@umn.edu
Comm. Table	Tom Remington	1311 N. Genesee Dr.	Lansing, MI 48915	517-484-5245	tomrem@michcom.net
	Ed Corey	1311 N. Genesee Dr.	Lansing, MI 48915	517-484-5245	lynnc@sojourn.com
Display Room	Don/Diane Carey	871 S. 76th St.	West Allis, WI 53214	414-453-2611	TheDCareys@aol.com
1 st Timers	Stan/Marje Walker	P O Box 70	Kearney, Ont, Ca. P0A1M0 .	705-636-9599	isuma@globalserve.net
Hospitality	Bill/Barbara Webb	7221 Hwy 70S, Pat. 520 ...	Nashville, TN 37221	615-646-3122	bill3514@bellsouth.net
Lamp Lighter	John Stringham	115481 St. Hwy JJ	Belgrade, MO 63622	573-766-5647	jstring@misn.com
Local Liaison	Joe DeMatteo	2170 Post Road	Clarksville, TN 37043	615-889-3025	demattel@bellsouth.net
Photographer	Mike VanGorder	301 GreenFarmWay NW ..	Marietta. GA 30064	770-919-2959	Michelataladdin@yahoo.com
Quilt Designer	Diane Carey	871 S. 76th St.	West Allis, WI 53214	414-453-2611	Mrs.lamplady@aol.com
Quilter	Ellen Strickland	3190 Turkey Hill Rd.	Winston-Salem, NC 27106 ...	336-768-6478	stricklandellen@triad.rr.com
Raffle	Fred/Ann Stevenson .	711 Center St.	Bellevue, KY 41073	859-291-5653	fstevenson@fuse.net
Registration	Bob/Corene Danko ...	2088 W. Wildwood Dr	Boonville, IN 47601	812-856-9720	bob_corene@aol.com
Security	Glenn White	6701 Poplar Corner Rd.	Bells, TN 38006	731-772-2847	vwhite@midsouthcoop.com
Seminars	David/Kathy Walton .	2540 Ryan Ct.	Beavercreek, OH 45434	937-426-3923	davenkate@ameritech.net
Show	DougJudy Myers	2501 10 th Ave. SW	Austin, MN 55912	507-433-6262	dmyers@smig.net
Show Admit.	Stan/Carol Hoke	10250 E. Indian Lk. Blvd. S	Indianapolis. IN 46236	317-823-0721	hokesc@earthlink.net
Signmaker	Sue Wood	P O Box 437	Philo, IL 61864	217-684-2908	swood88888@aol.com
Workshops	Kenny Robertson	21865 E. 2000 St.	Prairie City, IL 61470	309-772-3312	aladdin@bushnell.net

The Aladdin Lamp is 100

Bill Courter

The Aladdin lamp will be 100 years old on September 25, 2007.

On November 13, 1908 Victor S. Johnson, President, The Mantle Lamp Company of America, applied for trademark protection of the word Aladdin on a wick knob for "kerosene and alcohol mantle-burners and mantles and mica chimneys." Application No. 88,507 was formally registered on September 24, 1912. Johnson stated the trademark had been "continuously used in the business ...since September 25, 1908."



ALADDIN

Johnson applied again on Sept. 9, 1914 (No. 102,424) for trademark protection of the word ALADDIN (above) for incandescent mantle lamps, burners, lamp wicks, and parts of the lamp burner, and again on Oct. 31, 1914 (No. 104,072) to include lamp chimneys. These were registered in 1915. Both applications stated the word had been used continuously since Sept. 25, 1908.

When was Model 1 First Sold?

The first Aladdin branded lamps were not identified by model number. Only as improvements and changes were made were models important to identify replacement parts for lamps already sold. A chart of "Lamp Seasons" found in a company Paragraph Book (Fig. 418 in ATMNL) identified the marketing season for #1 Aladdin to begin May 1909. I believe this chart was created some years later when company officials and salesmen used correspondence letters in the Paragraph Book and the company became known as the "House of long letters." By this time formal marketing seasons had been established.

We cannot verify exactly when Plume & Atwood first stamped the wick knob with the word Aladdin for Johnson to begin selling the burners and lamps. It is important to note that Johnson owned the Aladdin trademark but not the patent for the lamp burner sold as Model No. 1. That 1908 patent (No. 901,139) was assigned to Plume and Atwood by Charles E. Wirth. Burners made under this patent were marked with various wick knobs—Contraco, Sunlight, KIM, Star O.L. & Co. and Aladdin. P & A sold burners, and founts, to several distributors!

Dave Corbissero has discovered early literature advertising "The New 1909 Aladdin Incandescent Kerosene Mantle Lamp." The flyer is not dated and features the parlor lamp and the mounted frame mantle. We will re-



print this with more discussion in a future newsletter.

We know that Model No. 1 burners are found with galleries that used the single wire support for a loop mantle, similar to the Practicus. I believe these burners and lamps were sold in 1908.

Victor S. Johnson testified in the 1935 trial against Aladdin Mfg. Co. that he sold the Practicus early in 1908 and began the sale of lamps "under the name of Aladdin in the Fall of 1908," stating: "Our trademark application for the registration of the mark will show the exact date." **That date was September 25, 1908.**

100 years

Most companies celebrate a century in business during the year after their first 100 years (*ie.* 1908 to 2008). This procedure has been more or less traditional, to celebrate when the company has actually been in business 101 years. You will observe that we have adopted the same statement in our logo (1908 to 2008); however, we will begin our celebration in 2007 and we carry our recognition through 2008.

Don and Diane Carey are planning our 2007 Gathering Display Room to review history of Aladdin lighting highlighted by important innovations and events that show why the Aladdin lamp has survived for 100 years.

The trademark images used here were copied directly from USPTO documents.



The IBM RAMAC 305 First hard drive commercial computer.

In September 1956 IBM launched the 305 RAMAC, the first commercial computer with a hard disk drive (HDD). The HDD weighed over a ton and stored 5MB of data. The IBM RAMAC 305 system with 350 disk storage leased for \$3,200 per month in 1957 dollars, equivalent to a purchase price of about \$160,000. More than 1000 systems were built. Production ended in 1961 and the RAMAC computer became obsolete in 1962.

This was well before the personal computer was thought feasible. Steve Wozniak in Sunnyvale, CA created a keyboard that worked with his home TV set. He worked for HP and they turned down the idea for a desktop computer. Wozniak and Steve Jobs thought differently, invented a PC motherboard and created Apple I. Apple Computer went public in 1980. By then Bill Gates was designing software for small computers. As they say, the rest is history.

Today we have 2 GB finger-size flash drives. Thanks to Kelley Garcia for this look back in computer-time.

continued from page 1

An unidentified lamp has been found which seems to be a modified G-282 but with a taller base. It has been called G-U-9, for now. Numerous examples are known.

To continue interest in 1948, Aladdin introduced "rainbow colors." The 1948 catalog called it "A Riot of Color." A wide variety of colors were applied over the Alacite. Some were far more appealing than others. The practice of marketing a lamp with a different catalog number where the only differences were color, tall or short harp, lamp size and/or lighted or unlighted bases continued. Again, this added to collector confusion today. Examples are G-35, G-37 and G-306 with only size differences. The G-42 and G-43 are the same lamp with colors that change through its production years. However, this color variation may help identify the year of manufacture. Many examples of this practice will be found by closely studying the catalogs. Study is required to properly identify a lamp correctly. Not an easy task, in some cases.

A very interesting lamp was the W-300 or Bowling Pin lamp. This was a 1948 lamp with a very unique shade numbered 1400. Of interest is that many of the lamp bases have Mantle Lamp Company stickers on the base. The Mantle Lamp Company name was replaced with the Aladdin name in 1937 or 1938. I have no explanation.

Another variation in lighting was the addition of a 200 watt Bolite reflector bulb. The lamp had a more flat and wider harp. An example is the G-304. Some collectors think someone bent the harp.

Throughout this period the lamps were mostly made of Alacite construction. Some had metal bases. There were also a few metal and wood lamps.

In the late 40s a different distribution plan was put in place to generate additional sales. This new venture was the "Party Plan" by Stanley Home Products. An Aladdin electric lamp was given as a hostess gift for having a Stanley party. The program sold over 300,000 lamps. The lamps



G-282 G-U-9



W-300



G-304



G-322 G-311



G-354

were G-322 and the G-311. We will assume by volume that the Stanley colors were chartreuse and gold lustre. Both lamps came in other colors. No wonder there are so many of them still in circulation!

In 1949 the new warehouses and headquarters in Nashville were opened to ultimately set a new direction for the company and place less emphasis on manufacturing at the Alexandria plant.

Pin-up lamps G-353 and G-354 were reintroduced in 1949.

1950 brought back the figurine and figural lamps. The Cupid was reintroduced as a G-46 but with a taller base and a G-333

called the Bride and Groom lamp appeared. A bride and groom finial was introduced but sold separately. Two new lamps entered in 1951 as a G-348 World lamp and a G-343 Lady with Dog. Much discussion revolves around what type of animal "the dog" actually was. Factory workers



G-343



G-333 G-46



G-335-C



G-348

called it "Cat Lady."

The 1951 catalog offered Hopalong Cassidy lamps, which became popular. The catalog claimed instant sales success. There was a table lamp (G-335-C), a boudoir lamp (G-47-C), night light urn (G-378-C) and a pin-up holster lamp (G-355-C). The table lamp was a sculptured head of Topper with a Hoppy shade with Hopalong and his pal California.

Someplace in the late 40s or early 50s, the Portland office manufactured four or five marble and brass lamps, similar lamps in the managers basement and sold in the Portland office. An executive in Chicago said : "If electric lamps can be designed and manufactured in the basement, we might as well get out of the business." So, they are out there.

Electric lamps were also manufactured in England, Australia and France. Lamp parts were shipped to Canada and assembled there. It appears, that from a small sample, that Canadian lamps have a small Aladdin decal on the socket.

We close this visit someplace in mid-1951. Virtually all production of Alacite lamps ended in 1951 which was truly the end of an era. However, sales of some Alacite lamps carried over into 1952.

The years 1951-56 were to end of a long and glorious history for Aladdin electric lamps. Next I will review this time that ushered in an entirely new look in Aladdin electric lamps. As in 1938, we collectors are forced to fondly look back or get in step with the "new" look as it is here to stay, like it or not! We will visit the new look in the next issue.

Space limitations prevent writing many of the historical details. I highly suggest you make reference to Bill Courter's "Aladdin Electric Lamps" for very interesting reading and for more detail about this era. There was a lot was happening at Aladdin during this time.



Comments on the Future of Collecting Compiled by Bill Courter

Wes Cowan, antique detective, auctioneer, TV personality and Louisville native, commented on antiques and collectibles in the Feb. 2007 issue of *Kentucky Monthly Magazine*.

Cowan says "ebay has expanded the antique market by bringing antiques to a huge audience, but at the same time, it has depressed the market for a wide range of collectibles and antiques by flooding the market."

Cowan states, "in the next decade, great collections will come onto the market as the baby boomers start to divest themselves of the things they collected in the 1960s-1980s. There will be great buying opportunities, but some categories of antiques will become depressed."

On the importance of the internet in today's auctions, Cowan suggests: "There are so many things to do today, so many different kinds of opportunities for people to do in their leisure time, that people can't afford to go to an auction and sit there for four or five hours. They can bid on that one item and then they are done for the rest of the day. The internet has changed our business."

And the most common mistake inexperienced collectors make: "Not learning enough about what they are buying before plunking down their dollars."

Changes in Collecting According to Rinker

Harry Rinker has written about the *Top Ten Changes in the Last Twenty Years of Collectibles*. His latest writing in *Antiques & Collecting Magazine* discusses the explosion of information today, worldwide collecting via the internet, ebay, increase in categories and kinds of collectibles (50 years old) and changes in demographics.

Rinker credits eBay, after a short 11 years, as the most profound and revolutionary factor. Ebay leads the way in globalization, offers new income opportunity to many new dealers, has expanded collectibles categories almost to infinity, and has revealed how much material is out there in private homes and shops. Ebay sellers have flooded the market with many collectibles.

Rinker points out that changing demographics have subtle impact on what we collect, or even whether we collect at all. He mentions smaller family units as result of fewer children and divorce, population shifts, aging collectors and a longer time between generations. Changes have resulted in fewer collectors and less demand for some collectibles.

Collecting Clubs

Most collecting clubs and publications have lamented some of Rinker's conclusions. Memberships and attendances are declining, some from aging but also due to monetary pressures and work constraints.

In the past, some collectibles experienced a boost from so-called "investors" who bought and sold as long as the trends favored nice profits. Those dealer-collectors have dropped by the wayside.

Aladdin collectors have certainly enjoyed appreciation in value over the years. Have we come to expect an

increase in value regardless of other factors? The true collector enjoys collecting as a hobby to study, learn and to meet and exchange information with others of similar interests. Aladdin lamps, in general, have kept pace with the production costs of new lamps, while the scarce and rare lamps seldom found today do command premium prices.

I believe the benefits of emergency light, dinner ambience, and enjoyment of collecting and friendships speak to the "Magic" of the Aladdin lamp. I believe Aladdin lamps are among the most reasonable and most practical collectibles today!

Collecting Aladdin lamps is but 35-40 years old, although the lamp will reach its 100th birthday on Sept. 25 this year. I bought my first Aladdin, a B-125 Corinthian, for light during frequent power outages in Southern Illinois. That led to searching for Model A, Model 12 and others causing my collecting instinct to take hold.

We collected kerosene lamps, not the least bit interested in electrics! Some of you collected for reasons of nostalgia—you grew up with Aladdin lighting your school studies. I remember our neighbor with an outhouse, two pitcher pumps (one inside, one outside) and kerosene lamps. I remember the odors well.

As I write I think of Aladdin collectors I came to know or meet during the early to mid-1960s. You may be able to add to my list: Bill Cook, E. W. Pyfer, Pearl Street, Ken & Aggie Thatcher, Tom Small, Ray Kline and Glenn Leathery.

By the late 1960s to about 1971 I remember Glen Southard, Ralph Keating, Harriet Schon, Roy & Grace Farr, Doc J. O. Lottes, Luke Sisco, C. M. Baker, Bruce Phillips, Jim & Neda Hayes, Jim Gray, Georgia Kiner, Milt Everhart, Ellsworth Lilly, George Summy, Ralph Pierce, Bill Mills, Lee Sharp, Larry Alley and Marner's Lamp Shop. Some were dealers, as well as collectors, who appreciated and accumulated many Aladdin lamps, willing to trade and help find the "tough ones."

In 1971 I finished *Aladdin—The Magic Name in Lamps* (the first book was shipped on Jan. 26, 1972) and the numbers of collectors grew by leaps and bounds. The *Mystic Light* was started in May, 1973 to give collectors up-to-date information and to buy-sell-trade. Kent Stratton became Aladdin Knight No. 1 when he sent \$10 before a newsletter was even announced. Jack Hansen signed up as Knight No. 503 during 1973. That was big business for a young college professor. I remember we staggered the mailings in attempt to even delivery time. You complained if the newsletter or the *Antique Trader* did not arrive on schedule!

I am sure I have missed many early collectors as subscriptions grew at a rate of 250-300 per year for several years. Over the years we have been blessed by knowing 8840 Aladdin Knights. The current newsletter is mailed to nearly 1500 worldwide, down from over 1750.

Buying Old

Auction Action Antique News reports that "buying old is not just for the old," suggesting the word "antique" may bring visions of musty and moldy to the minds of

young people. Words like vintage, designer and celebrity better influence and motivate their interests. The challenge is to educate younger couples about the satisfaction of collecting items, such as lamps, for use in the home to enhance the décor and give pleasure. Early 20th-century lamps can provide colorful accent in any room. I believe all lamps from the past fit that purpose well.

I stated in the last newsletter—*The worth of collectibles and artifacts, such as old lamps, is not only in their age or monetary value but also in what they can tell us about the past.* I believe this is an excellent goal for attracting new collectors. Perhaps the provenance of a few well-chosen lamps embellished with the history and science of Ami Argand, Carl Auer von Welsbach; and, the brighter light used by grandma and grandpa will create renewed interest.

Reproductions

Reproductions and fraud have plagued Aladdin collectors since 1977. These outright misrepresentations, created *only* for money, hurt the hobby. Usually it is the beginner who suffers most. An "old original" cobalt blue repro "Diamond Quilt" sold on eBay this February. The seller was informed by Aladdin collectors and admitted "receiving two e-mails that the lamp was not an old Aladdin, but the burner and shade (chimney) certainly were Aladdin." Eleven bids gave the winner the prize for \$425.

I have kept you informed the best I can through this newsletter and collector manuals.

In this issue we publish tips how to tell if an Aladdin Parlor lamp has been altered. This information will help you to know the difference between an outright fraud and an honest restoration. A seller on eBay, or in an antique mall may not know a lamp bought in a collection is a fraud. It is your responsibility to learn. On the other side of the coin—I believe the dealer should refund a sale when he too is fooled.

Heed the words by Wes Cowan—study and learn before plunking down your dollars.



Shannon and Kevin Harper sent this photo featured in their *Fairbanks Daily News-Miner*, Oct. 29, 2006. It shows a "Masquerade Ball, Halloween Night, Ester Creek (Berry), 1908." The accompanying story said the town included five saloons, two hotels and a multitude of stores and services. We can't really tell that the people are 'dressed up' for Halloween as their attire seems proper for 1908. The lamp is not Aladdin and appears to be a Globe Incandescent made by the Standard Lighting Co., Cleveland, Ohio. Thanks for such a neat picture.

Faking Aladdin Parlor Lamps Beyond "Just Restoration" Tom Small and Bill Courter

The Model #1 to #4 Aladdin Parlor Lamps are valued several times higher than respective model table lamps. Parlor Lamps cost more when originally sold and are therefore more scarce. Their attractive and distinctive design has always made them eagerly sought by collectors. Unfortunately, unscrupulous lamp sellers have converted non-Aladdin parlor lamp founts to use Aladdin burners by inserting wrong or substitute center-draft tubes in order to deceive collectors who paid high prices for these lamps. Our intent here is to clarify what to look for as you consider purchase of an Aladdin Parlor Lamp.

Plume and Atwood (P & A) sold the same basic parlor lamp fount as a Sewing Lamp and the Colonial Parlor Lamp with P & A round-wick burners (see below). These center-draft lamps predate the Aladdin and used larger inner wick tubes (7 1/2 inches long and 1 5/16 inches diameter) that nearly completely filled the opening at the mid stem joint between the foot and the fount (below). The collar of these proprietary founts used a coarse burner thread similar to the threads found on Aladdin Model B founts.



P & A Sewing Lamp, ca. 1906.



The P & A Sewing Lamp is center-draft with large wick tube. See metal heat exchange baffle in tube.

P & A also sold parlor lamp founts to other distributors. In most cases, these founts were sold with either the American #2 or #3 fine thread collars and had the fount bottom plugged (photo above right) so side-draft burners could be mounted. Common examples of lamps sold this way include the Saxonia, the Praktus, and the Practicus. Oddly, the Saxonia fount is distinctive for its lack of feet on the loading weight. We believe the Praktus burner was marketed in the USA with only the #2 burner threading. As a consequence, parlor lamp founts fitted with this burner have a fount collar of the #2 size (photo of Praktus above right). The Practicus Parlor Lamp, briefly sold by The Connecticut Trading Company (Contraco) and the Mantle Lamp Company of America had founts fitted with either the #2 or #3 collars. Founts for these side-draft applications have the required plug.

Unlike the side-draft burners described above, the Aladdin Parlor Lamp in Models #1 through #4 has a center-



Practicus Parlor Lamp ca. 1908.



Plug in bottom of P & A Parlor Lamp to use for side-draft burners.

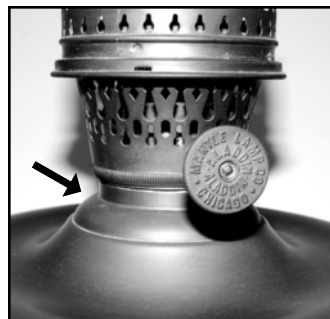
Note: The P & A collars for Practicus and Praktus burners have a noticeable rim around their base.



Praktus P & A Parlor Lamp fitted with collar for #2 burner threads.

draft burner requiring a fount with an inner wick tube (center-draft tube) that extends to the fount bottom. These tubes vary only slightly in their length, most measure about 7-7/8 inches, + or - 1/16 inch. Of course, the flame spreader seat and the bulge in the draft tube (also referred to as the wick carrier "stop") vary depending upon the specific Aladdin Parlor Lamp model.

Note that the basic difference at the fount top between the P & A proprietary fount and the founts distributed to other companies, including Aladdin, is in the collar threading and its size. To accommodate these uses by different companies, P & A made the collar as a separate piece that is soldered to the fount top (see above and left).

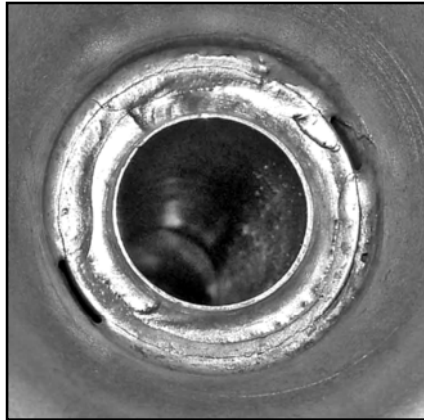


One way less than honest dealers have converted non-Aladdin parlor founts to use Aladdin burners is by changing the collar (such as

on a P & A Colonial) and replacing it with a collar removed from an Aladdin fount. Since the originating fount (such as from an Aladdin table lamp) does not have a solder joint near the fount top, the forger must cut the collar off which is no easy task because the collar must mate up perfectly with the fount top and be soldered on the fount inside. One way to detect forgeries is to carefully inspect the collar joint for

uniformity of fit on the lamp exterior. We also recommend inspection of the solder joint inside the fount. Look for a quality job with solder uniformly applied and some patina to the solder surface. A dental mirror should prove useful for this task.

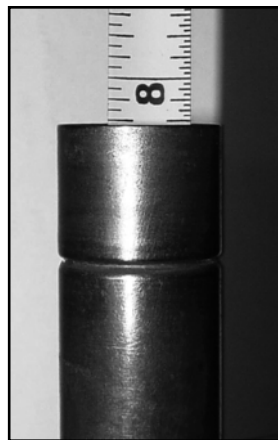
Founts that had either the large P & A Colonial tube or the fount bottom plug also have to be modified to accept the Aladdin center-draft tube. One of the interesting features of original Aladdin Parlor Lamp draft tube installations is the pair of indentations in the solder, generally opposite one another and in between the draft tube and the stem wall (photo right). How these indentations were originally created is unknown, but heating the solder around the draft tube removes them. Their absence is another indicator of post manufacturing modification of the parlor lamp fount.



Properly soldered wick tube with two indentations on opposite sides.

What to look for in an altered parlor lamp represented as an Aladdin:

One major problem to convert a P & A fount is the wick tube. The wick tube of the parlor lamp is longer than used in hanging or table lamp founts or oil pots. The tube is soldered in place with a collar fitting (see below right). The parlor lamp wick tube is 7 13/16 to 7 15/16 inches long with no joints or connections. The table lamp wick tube is one-half inch shorter! The hanging lamp font is one-fourth inch shorter. Therefore the crafty converter-person must try to use the shorter tube or lengthen the tube in some way.



Short wick tube.

A second major problem is to adapt a threaded collar that fits the Aladdin burner to the top of the destination parlor lamp fount. Cutting the collar off a donor fount precisely is very difficult. It must fit perfectly with very little or no solder obvious on the exterior of the parlor lamp fount. P & A did quality work and you expect to see such results.

Additional points:

1. Original parlor lamps were not nickel-plated. Beware if the wick tube is nickel-plated which is a sure sign of replacement and deception. Inspect the tube down in the fount looking to see if it has been burnished. Burnishing (polishing) could only have been done if the tube was out of the lamp recently.

2. Be wary if the fount and burner have been burnished.

Not a positive sign for a fake, but a sign of potential alterations.

3. Measure the length of the wick tube. It should measure close to 7 15/16 inches long. There must be a wick raiser stop on the tube down in the fount. We note that other brands of lamps may have wick tubes without a wick raiser stop.

4. Inspect the wick tube for substitution. The Model 2 or Model 4 tubes from table lamps could be used. Model 5 & Model 6 tubes were made in two sections with drain holes to allow fuel to drain back into the fount. These table lamp tubes are 7 to 7 1/8 inches long.

5. Inspect carefully for any extension to lengthen the tube. In one case (illustrated here) a flame spreader was used to accomplish the added length.

6. Inspect the soldering where the tube is supported and centered into the base of the fount. The solder area should be clean, neat and uniform and if untampered with the two indentations will be present.

7. Inspect the connection of the foot and base to the oil reservoir of the fount. Excess solder or otherwise sloppy connection at this point suggests a replacement foot or removal to work on the wick tube.

The lesson.

Study and learn to recognize the correct parts for the lamps you collect. Inspect your potential lamp purchase carefully. Beware of any of the above signs in parlor lamps. Beware if a deal sounds too good.

It should be pointed out that there is a distinction between restoration and outright fraud. Because the parlor lamp is a unique lamp, many of these valuable lamps were electrified by cutting the draft tube off and gutting the burner to accept an electric socket. Restoration by replacing the gutted burner and the correct center-draft tube is acceptable, provided both the seller and buyer clearly understand the piece is a restoration and is represented and priced accordingly. In our view, taking a fount that started life as something else and modifying it so it looks like an Aladdin Parlor Lamp is nothing more than fraud. These lamps victimize everyone who owns them today and tomorrow. Several such lamps surfaced some years ago. Another was purchased recently which is the impetus for this article.

References: P & A Catalog ca. 1906; The Plume & Atwood Parlor Lamp (March 2003 *Mystic Light Newsletter*). Our appreciation to Jim Fuller who donated the Model 3 fount for this study.



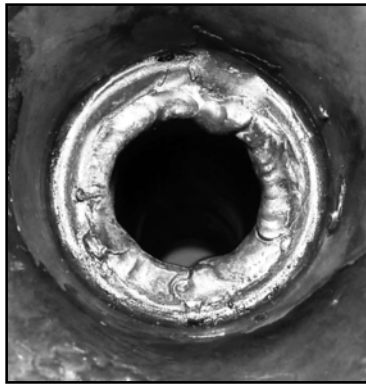
Collar fitting that is soldered into place to support the wick tube in the base of the fount. The tube usually extends below the collar.

Altered Model 2

Model 2 Parlor Lamp, previously polished. Attractive patina.



Model 6 wick tube showing one of three holes for drainage.



Sloppy solder work. The bottom of the wick tube installed higher than normal and does not show through the collar. The two indentations are absent.

Altered Model 3

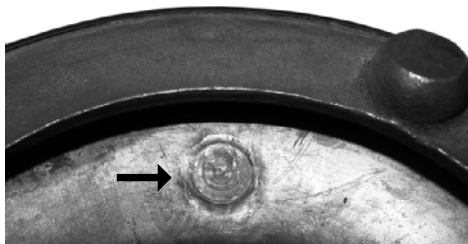
Model 3 Parlor Lamp, highly polished, attractive on first look.



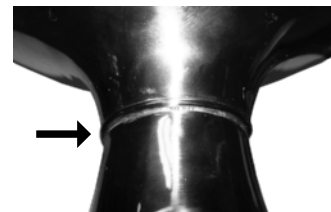
Wick tube appears correct on first glance, but see that it is nickel-plated (see below)! Note wick raiser stop down inside the fount.



Base of wick tube elongated by adding a flame spreader. Compare solder work here with properly soldered wick tube that has two indentations.



A repair plug not visible from the top side.



Excess solder evident where the foot was attached to the fount reservoir.



Midwest Regional Meet

March 22-23, 2007

Bob & Judy Jansen

Stoney Creek Inn Convention Center
5291 Stoney Creek Ct
515-334-9000
Johnston, Iowa 50131 Exit 129

We invite you to join us for lamp trading, selling and just "plain old fun." Plan to arrive Wednesday or Thursday. Meet old friends and make new ones. Early-bird registration will open Wednesday afternoon at 3 PM. Dinner is on your own Wednesday and Thursday evening.

Registration will reopen 9 AM Thursday with snacks and fun for all. Snack items will be appreciated. Thursday and Friday are reserved for room trading. We have scheduled several educational seminars for Thursday evening and Friday as well.

Registration is \$10 per family. We will have a buffet at 6 PM Friday evening. The cost of the dinner is \$20.50 per person (tax and tip included). A raffle will follow the dinner. Only the "Raffle Team" knows what will happen there. Plan to attend.

Note: **Change in hotel from last year.** The hotel reserved a block of rooms until March 7, 2007. Be sure to tell them you are with the Aladdin Knights when making reservations. You must be registered with the Aladdin Knights Midwest Meet to receive the \$75 (plus tax) rate. A complimentary continental breakfast is included in this rate. Check in time is 3 PM.

We have mailed registration forms to previous attendees. If you have not attended previously and would like information, call Bob and Judy Jansen (402) 895-2073 or email us at bjansen97@aol.com.



13th Allure of Light

April 7, 2007

Terry Greenroy

The 13th Annual Allure Of Light antique lamp show and sale is Saturday April 7, 2007, 9 a.m. to 4 p.m. Legend Bank community room, at 307 N. Mason Street downtown Bowie, Texas.

This event is hosted by the North Texas Aladdin Knights and Bowie Main Street Association. We welcome all collectors and enthusiasts of antique lighting.

We have special rates with the Days Inn—940-872-5426; Nostalgia Bed and Breakfast—940-872-6272; and Gazebo Bed and Breakfast—940-872-4852. Ask for lamp show rates when you make reservations.

Please call us if you need any additional information. Terry Greenroy 940-872-2639, Susan Campbell 940-872-6246, or Bonnie Jeules 940-872-1173.



29th Eastern Lighting Meet

March 29-31, 2007

Tom Small & Tom Millman

Last call for the Eastern Lighting Collector's Meet. If you have not already made plans to join us, you need to do so soon. Our meet is open to all Aladdin Knights and other enthusiasts of fueled lighting. Please consider this your invitation to join us for this granddaddy of all of the regional meets. This is our 29th year of getting people together to have lots of fun, trading lamps, and making lots of new friends and greeting old ones in the process.

Our headquarters for the weekend is the Quality Inn (formerly the Ramada) in Somerset, PA. Somerset is easily reached from all compass directions and is adjacent to the toll booth of the PA Turnpike at Exit 110 (formerly Exit 10). Somerset is about one hour east of Pittsburgh. Our group rate for the weekend is a "knock your socks off" \$59.95 per room per night which includes all taxes. This rate leaves a lot of room in your budget for taking home another lamp or two from the weekend. For folks with pets, there is a one time charge of \$10 extra, so no reason to leave Fido or Felix at home- bring them too. The hotel has amenities such as a swimming pool, an exercise room, and plenty of meeting space. The lobby area also has a nice fireplace lounge which is great for late night bull sessions.

Previous attendees should have received a detailed registration letter in January either by email or snail mail. If you did not get yours, or if you are considering joining us for the first time, contact either Tom Small (814-634-5639, email: koko@shol.com), or Tom Millman (513-734-6884, evenings after 7:30 pm EST). We'll get all the details out to you as quickly as possible. All participants for the weekend must register with us whether you just come to room shop or if you stay for all of the events. If you register before March 22nd, the fee is only \$7 which goes toward defraying expenses since we are non-profit. Our low rate room block also gets released for general sale to off the road customers that date. If in doubt, reserve a room.

The schedule for the weekend follows previous meets. Thursday and Friday are reserved for room shopping. The lamp show is set up Saturday morning and opens at 1:00 pm. Saturday evening we have a dinner buffet set up especially for us and the food is excellent. The evening seminar follows later at 7:30 pm.

The program this year is by Fred and Ann Stevenson who will discuss printing processes and describe how Aladdin advertising was produced. Fred plans to have a table top press available and will demonstrate the printing process.

Come, meet old friends, make new ones, and shop the largest fueled lighting market anywhere except for the Aladdin Gathering. Happy lamp hunting, safe traveling, and we look forward to seeing you in Somerset!



LAST CALL—corrections to the list we publish of current Aladdin Knights who buy-sell and repair old Aladdin lamps. Many of these dealers also sell new replacement parts, including new models of Aladdin lamps. This list is posted on the Aladdin Knights website. This is a service of the *Mystic Light* provided at no charge for benefit of Aladdin Knights.

“Antique” Aladdin Lamp Dealers-2007

These are Aladdin Knights who sell **old lamps and replacement parts**. Several also specialize in repairs and restoration (indicated by **RR**). Call them for details on restoration and plating services.

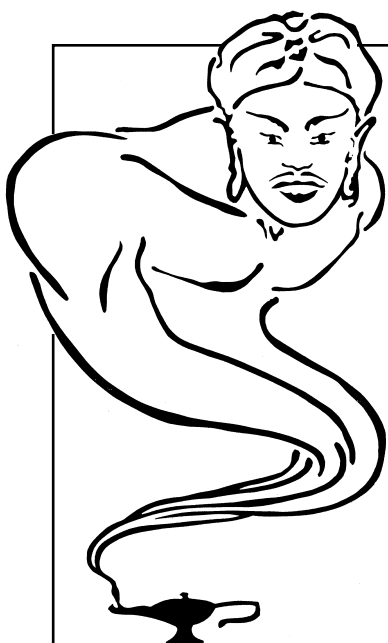
<u>Dealer(s)</u>	<u>Street</u>	<u>City/State</u>	<u>Zip</u>	<u>Phone</u>
Albright’s Lamps-Antiques RR	1609 N. Hwy 87	Elon, NC	27244	336-584-2638
Country Lights-Ron Jurgens	57 S. Main St.	Clintonville, WI	54929	715-754-2774
Dewey, Curtis	PO Box 21148	Cheyenne, WY	82003	307-631-3150
Diehl, Tom	1118 Fowler River Rd.	Alexandria, NH	03222	603-744-8557
Dudley, Richard RR	1412 Forest Lane	Woodbridge, VA	22191	703-491-2878
Gnan, Steve	11280 Dale Rd.	Woodbury, MN	55129	651-459-0368
Good Pickins-John MacLean	220 Polk	Jefferson, TX	75657	903-665-3003
Hayes, Jim	4455 Centerville Rd.	Rockford, IL	61102	815-963-9051
John’s Antiques RR	261 Fort Road	St. Paul, MN	55102	651-222-6131
Jones, Mason & Rhonda RR	143 S. Main St.	Eagleville, TN	37060	615-274-6274
John Kruesel General Mdse.	22 3 rd St. SW	Rochester, MN	55902	507-289-8049
Leipold, Darel & LaVerna	239 Water St.	Excelsior, MN	55331	612-474-5880
Meily, Don	RD #1, Box 144	Hershey, PA	17033	717-534-2659
Miller, Richard & Cynthia	309 E. Main St.	Ravenna, OH	44266	330-2966499
Millman, Tom RR	231 S. Main St.	Bethel, OH	45106	513-734-6884
Moore, John RR	206 York Lane	Yorktown, VA	23692	757-890-9010
Moore, Rob RR	1030 East Fifth Ave.	Mitchell, SD	57301	605-996-6853
Myers, Doug/Judy	2501 10th Ave. SW	Austin, MN	55912	507-433-6262
Northeast Trading Post	301 N. East St.	Dix, IL	62830	618-266-7454
Past Times-Reggie Sevy RR	1022 Harriet Cir.	Anderson, SC	29621	864-226-7499
Pink Barn, C. Kottman RR	17600 SW Old Hwy Rd.	Rushville, MO	64484	816-688-7730
Raynie, Joyce/Ron	8360 Gwendolyn Dr.	Denham Springs, LA	70726	225-667-3165
Reid, Mike	5241 East 17 th St.	Tucson, AZ	85711	520-325-3030
Remember Yesterday RR	607 2 nd St.	Petaluma, CA	94952	707-778-1567
Schieszer, Fredrick RR	4078 S.W. Lido Dr.	Lee’s Summit, MO	64082	816-537-8259
Sentimental Journey-Wiggins	1011 W. 24 Hwy	Independence, MO	64050	816-836-8343
Skinner’s Coachhse Antiq RR	S. Market & Sage Dr.	Monticello, IL	61856	217-762-8425
Small, Tom	201 Hemlock Lane	Meyersdale, PA	15552	814-634-5639
Soy City Antique Lamps	445 S. Nelson Blvd.	Decatur, IL	62521	217-429-6717
Stringham, Alice	11548 St. Hwy JJ	Belgrade, MO	63622	573-766-5647
Teter, Ken RR	7862 Nashville St.	Ringgold, GA	30736	706-935-9249
Van Es, Jim RR	810 Elden St.	Herndon, VA	22070	703-435-9045
Warren’s Warren RR	101 Ayyar Court	Slippery Rock, PA	16057	724-738-0704
Wells Cargo Antiques-D.Wells	7085 Main St.	Olivet, MI	49076	269-749-9413

Canada

Anderson, David	Box 1985	St. Paul, Alb.	T0A 3A0	780-645-5267
Ettinger, Saul	5845 Ave. Marc Chagall	Cote St. Luc, Que.	H4W 3K4	514-486-8889
Logan, Tom & Geri RR	RR 4	Stirling, Ont.	KOK 3E0	877-654-6333
McIvor, Bud RR	584 Dugald Rd.	Dugald, Man.	R0E 0K0	204-853-2085
St. Denis, Ray	1121 Hamilton Rd.	London, Ont.	N5W 1A7	519-951-0738
Walker, Stan/Marie	PO Box 5441	Huntsville, Ont.	P1H 2K8	705-636-9530

Australia

Antique Lamp Shop	204 Whatley Crescent	Maylands, Austr.	WA 6051	08-9272-4531
Assoc. Oil Lamps Australia	1 Araluen Rd.	Braidwood, Austr.	NSW 2622	www.oillamps.com.au
Brandt Bros.	245 Princes Hwy.	Kogarah, Austr.	NSW 2217	1300-655-804
T. W. Sands & Co.	508 Swanston St.	Carlton, Austr.	Vict. 3053	61-3-9347-2804



The Mystic Light of the Aladdin Knights

Aladdin Electric Lamps 1946 to 1951—cover story.

NAALC & 2007 Gathering—page 4.

The Aladdin Lamp is 100—page 5.

The Future of Collecting—page 7.

Faking Aladdin Parlor Lamps—page 9.

Regional Meets—page 12.

Bill & Treva Courter
3935 Kelley Road
Kevil, KY 42053-9431

LIGHT
YOUR
ALADDIN

First-Class Mail
U. S. POSTAGE PAID
Paducah, KY
Permit No. 138

Address Service Requested

FIRST CLASS MAIL